

Anchor Selection Guide

DRYWALL

WALLDOG™	HOLDS UP TO	50	LBS
CONICAL PLASTIC ANCHOR	HOLDS UP TO	10	LBS
RIBBED PLASTIC ANCHOR	HOLDS UP TO	15	LBS
WALLBOARD ANCHOR	HOLDS UP TO	50	LBS
HOLLOW WALL ANCHOR	HOLDS UP TO	80	LBS
DRIVE WALL ANCHOR	HOLDS UP TO	60	LBS
DRILL TOGGLE	HOLDS UP TO	70	LBS
POP-TOGGLE™	HOLDS UP TO	80	LBS
STRAP-TOGGLE™	HOLDS UP TO	80	LBS
TOGGLE BOLT	HOLDS UP TO	120	LBS

BLOCK

WALLDOG™	HOLDS UP TO	75	LBS
CONICAL PLASTIC ANCHOR	HOLDS UP TO	20	LBS
RIBBED PLASTIC ANCHOR	HOLDS UP TO	20	LBS
WALL PLUG	HOLDS UP TO	30	LBS
NYLON NAILIN®	HOLDS UP TO	40	LBS
LEAD WOOD SCREW ANCHOR	HOLDS UP TO	80	LBS
SPIKE®	HOLDS UP TO	160	LBS
TAPPER®	HOLDS UP TO	190	LBS
TOGGLE BOLT	HOLDS UP TO	200	LBS
LAG SHIELD SHORT SIZES ONLY	HOLDS UP TO	200	LBS
ZAMAC NAILIN®	HOLDS UP TO	215	LBS
STRAP-TOGGLE™	HOLDS UP TO	330	LBS
MACHINE SCREW ANCHOR	HOLDS UP TO	470	LBS
SLEEVE ANCHOR	HOLDS UP TO	490	LBS

PLASTER

WALLDOG™	HOLDS UP TO	50	LBS
CONICAL PLASTIC ANCHOR	HOLDS UP TO	10	LBS
RIBBED PLASTIC ANCHOR	HOLDS UP TO	15	LBS
HOLLOW WALL ANCHOR LONG SIZES ONLY	HOLDS UP TO	80	LBS
POP-TOGGLE™	HOLDS UP TO	80	LBS
STRAP-TOGGLE™	HOLDS UP TO	80	LBS
TOGGLE BOLT	HOLDS UP TO	120	LBS

BRICK

WALLDOG™	HOLDS UP TO	150	LBS
CONICAL PLASTIC ANCHOR	HOLDS UP TO	20	LBS
RIBBED PLASTIC ANCHOR	HOLDS UP TO	20	LBS
WALL PLUG	HOLDS UP TO	30	LBS
NYLON NAILIN®	HOLDS UP TO	50	LBS
LEAD WOOD SCREW ANCHOR	HOLDS UP TO	65	LBS
ZAMAC NAILIN®	HOLDS UP TO	190	LBS
TAPPER®	HOLDS UP TO	225	LBS
LAG SHIELD	HOLDS UP TO	240	LBS
MACHINE SCREW ANCHOR	HOLDS UP TO	640	LBS
SLEEVE ANCHOR	HOLDS UP TO	700	LBS

TILE

HOLLOW WALL ANCHOR	HOLDS UP TO	80	LBS
POP-TOGGLE™	HOLDS UP TO	80	LBS
STRAP-TOGGLE™	HOLDS UP TO	80	LBS
TOGGLE BOLT	HOLDS UP TO	120	LBS

CONCRETE

WALLDOG™	HOLDS UP TO	175	LBS
CONICAL PLASTIC ANCHOR	HOLDS UP TO	50	LBS
RIBBED PLASTIC ANCHOR	HOLDS UP TO	50	LBS
NYLON NAILIN®	HOLDS UP TO	70	LBS
LEAD WOOD SCREW ANCHOR	HOLDS UP TO	140	LBS
WALL PLUG	HOLDS UP TO	150	LBS
ZAMAC NAILIN®	HOLDS UP TO	325	LBS
TAPPER®	HOLDS UP TO	370	LBS
LAG SHIELD	HOLDS UP TO	535	LBS
SPIKE®	HOLDS UP TO	650	LBS
STRIKE ANCHOR	HOLDS UP TO	1015	LBS
MACHINE SCREW ANCHOR	HOLDS UP TO	1075	LBS
DRIVE®	HOLDS UP TO	1225	LBS
STUD BOLT ANCHOR	HOLDS UP TO	1250	LBS
DOUBLE MACHINE BOLT ANCHOR	HOLDS UP TO	1750	LBS
MACHINE BOLT ANCHOR	HOLDS UP TO	2050	LBS
SLEEVE ANCHOR	HOLDS UP TO	2160	LBS
DROP-IN ANCHOR	HOLDS UP TO	3600	LBS
WEDGE-BOLT®	HOLDS UP TO	4475	LBS
POWER-STUD™ WEDGE	HOLDS UP TO	8850	LBS



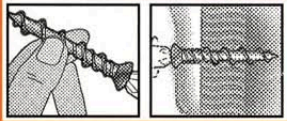
The Walldog™ is an all steel one-piece screw anchor designed to screw directly through fixture into all base materials including wallboard, plywood, concrete, hollow or grout filled block, brick and plaster.



Anchor Specifications:

ANCHOR SIZE	DRILL SIZE	MIN. EMBED	MAXIMUM ALLOWABLE LOAD (LBS.)			
			1/2" DRYWALL	4,000 PSI CONCRETE	C-90 HOLLOW BLOCK	BRICK
3/16 x 1-1/4"	3/16"	3/4"	50	175	75	95

Installation instructions:



- Will penetrate wood & metal studs without pre-drilling.
- Not recommended for ceiling applications.
- Recommended for indoor, non-corrosive applications only.
- Pre-drill for plaster, concrete, and masonry base material.

Required Tools:

Drywall Installation: Screwdriver
Concrete/Masonry/Plaster Installation: Drill, 3/16" Masonry Drill Bit, Phillips Bit Driver

PLASTIC ANCHOR

Recommended for quick, easy fastening of fixtures in a variety of light duty applications from drywall to concrete.



Anchor Specifications:

ANCHOR SIZE	DRILL SIZE	SCREW SIZE	MAXIMUM ALLOWABLE LOAD (LBS.)	
			1/2" DRYWALL	4,000 PSI CONCRETE
6-8 x 3/4"	3/16"	6-8	5	30
8-10 x 7/8"	3/16"	8-10	5	50
10-12 x 1"	1/4"	10-12	10	50
14-16 x 1-3/8"	5/16"	14-16	10	50

Installation instructions:



- Pre-drilling required.
- Not recommended for ceiling applications.
- Insert anchor flush with surface.

Required Tools:

Drill, Appropriate Drill Bit, Screwdriver

RIBBED PLASTIC ANCHOR

Recommended for quick, easy fastening of fixtures in a variety of light duty applications from drywall to concrete.



Anchor Specifications:

ANCHOR SIZE	DRILL SIZE	SCREW SIZE	MAXIMUM ALLOWABLE LOAD (LBS.)	
			1/2" DRYWALL	4,000 PSI CONCRETE
4-6-8 x 7/8"	3/16"	4-6-8	10	30
8-10-12 x 1-1/4"	1/4"	8-10-12	15	50
12-14-16 x 1-1/2"	5/16"	12-14-16	10	50

Installation instructions:



- Pre-drilling required.
- Not recommended for ceiling applications.
- Insert anchor flush with surface.

Required Tools:

Drill, Appropriate Drill Bit, Screwdriver

WALLBOARD ANCHOR

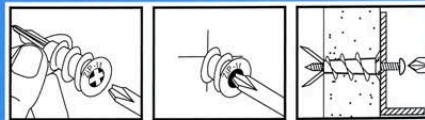
Self drilling anchor designed for a variety of fixtures in drywall. Available in non-conductive nylon or durable zinc material.



Anchor Specifications:

ANCHOR SIZE	SCREW SIZE	MAXIMUM ALLOWABLE LOAD (LBS.)
		1/2" DRYWALL
Nylon # 6	6	30
Nylon # 8	8	50
Zinc # 6	6	30
Zinc # 8	8	50

Installation instructions:



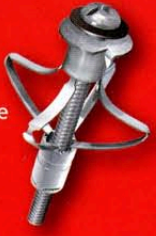
- Not recommended for ceiling applications.
- Do not over tighten.

Required Tools:

Screwdriver

HOLLOW WALL ANCHOR

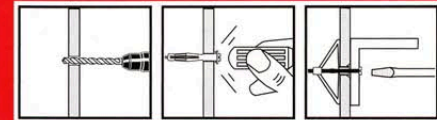
Quick and easy to install. Screw is removable once anchor is set. Spider-like legs expand against the back of the drywall, providing secure anchoring.



Anchor Specifications:

SIZE	DRILL SIZE	MAXIMUM ALLOWABLE LOAD (LBS.)		
		1/2" DRYWALL	1/4" PLYWOOD	WALL THICKNESS
1/8" X-Short	5/16"	-	60 lbs.	1/8"-1/4"
1/8" Short	5/16"	60 lbs.	-	3/8"-1/2"
1/8" Long	5/16"	60 lbs.	-	5/8"-1"
1/8" X-Long	5/16"	60 lbs.	-	1-1/4"-1-1/2"
1/8" LS	5/16"	60 lbs.	-	1/8"-13/16"
3/16" Short	3/8"	70 lbs.	-	3/8"-5/8"
3/16" Long	3/8"	70 lbs.	-	3/4"-1-1/8"
3/16" X-Long	3/8"	70 lbs.	-	1-1/4"-1-3/4"
1/4" Short	7/16"	80 lbs.	-	3/8"-1/2"
1/4" Long	7/16"	80 lbs.	-	5/8"-1-1/8"
1/4" X-Long	7/16"	80 lbs.	-	1-1/4"-1-3/4"

Installation instructions:



- Use "Long" sizes for plaster and tile.
- Pre-drilling required.

Required Tools:

Drill, Appropriate Drill Bit, Screwdriver

DRIVE WALL ANCHOR

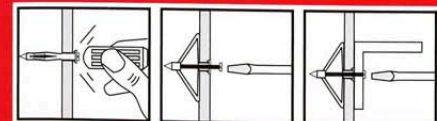
Quick and easy to install with no pre-drilling. Screw is removable once anchor is set. For drywall use only. Make starter hole with tip, then tap anchor into wall.



Anchor Specifications:

SIZE	MAXIMUM ALLOWABLE LOAD (LBS.)	
	1/2" DRYWALL	WALL THICKNESS
1/8" X-Short	60 lbs.	1/8"-1/4"
1/8" Short	60 lbs.	3/8"-1/2"
1/8" Long	60 lbs.	5/8"-1"
1/8" LS	60 lbs.	1/8"-13/16"

Installation instructions:



Required Tools:

Hammer, Screwdriver

POP-TOGGLE™

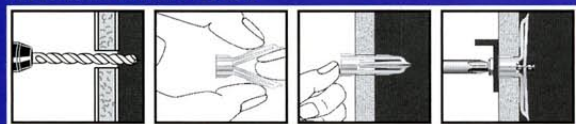
Pop Toggles pre-install without a screw, allowing for easy placement and removal of fixture.



Anchor Specifications:

SIZE	DRILL SIZE	MAXIMUM ALLOWABLE LOAD (LBS.)			WALL THICKNESS
		1/4" PLYWOOD	1/2" DRYWALL	5/8" DRYWALL	
1/8" Small	5/16"	40 lbs.	-	-	1/8"-1/4"
3/8" Medium	5/16"	-	60 lbs.	-	3/8"-1/2"
5/8" Large	5/16"	-	-	80 lbs.	5/8"-3/4"

Installation instructions



- Accepts screw sizes from #6 through #14.
- Not recommended for ceiling applications.
- Use included pin to expand anchor behind drywall.

Required Tools:

Drill, Appropriate Drill Bit, Screwdriver

DRILL TOGGLE

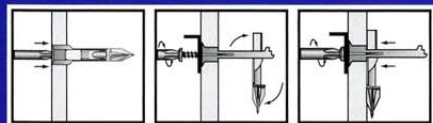
Heavy duty **self drilling** anchor for drywall. Use as a replacement for toggle bolts and hollow wall anchors.



Anchor Specifications:

3/8"-5/8" Drywall	MAXIMUM ALLOWABLE LOAD (LBS.)
	70 lbs.

Installation instructions:



- Installs faster than toggle bolts.
- Not recommended for ceiling applications.

Required Tools:

Screwdriver

SLEEVE ANCHOR

Masonry anchor for heavy duty fastening to concrete, brick, or block.

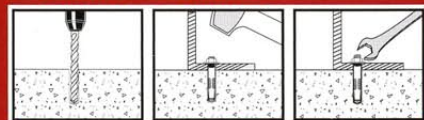


Anchor Specifications:

ANCHOR DIAMETER	DRILL SIZE	MINIMUM EMBEDMENT	MAXIMUM ALLOWABLE LOAD (LBS.)		
			4,000 PSI CONCRETE	C-90 HOLLOW BLOCK	BRICK
1/4"	1/4"	1-1/8"	240	240*	190*
5/16"	5/16"	1-1/2"	260	285*	225*
3/8"	3/8"	1-5/8"	385	340*	250*
1/2"	1/2"	2-1/4"	935	490*	700*
5/8"	5/8"	2-3/8"	1690	-	-
3/4"	3/4"	2-1/4"	2160	-	-

* 1-1/2" minimum embedment.

Installation instructions:



- Available in hex head, acorn nut, round head and flat head.
- Available in steel/zinc and 304 stainless.

Required Tools:

Drill, Appropriate Drill Bit, Wrench or Screwdriver, Hammer

POWER-STUD™ WEDGE ANCHOR

The Power-Stud is a torque controlled, wedge expansion anchor that is designed for concrete applications.



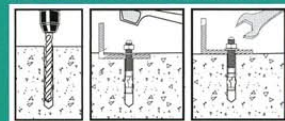
BUILDING CODE APPROVED



Anchor Specifications:

ANCHOR SIZE	DRILL SIZE	MINIMUM EMBEDMENT	MAXIMUM ALLOWABLE LOAD (LBS.)
			4,000 PSI CONCRETE
1/4"	1/4"	1-1/8"	Up to 515
3/8"	3/8"	1-5/8"	Up to 1295
1/2"	1/2"	2-1/4"	Up to 1795
5/8"	5/8"	2-3/4"	Up to 3040
3/4"	3/4"	3-3/8"	Up to 4275
7/8"	7/8"	3-7/8"	Up to 5110
1"	1"	4-1/2"	Up to 8850

Installation instructions:



- Clip design prevents spinning during installation.
- Drive anchor through fixture until the nut and washer are firmly seated against fixture.
- Available in steel/zinc, mech. galvanized and 304 stainless.

Required Tools:

Drill, Appropriate Drill Bit, Hammer, Wrench

WEDGE-BOLT®

One piece, heavy duty screw anchor with a finished hex head. It is easy to identify, fully removable and vibration resistant.



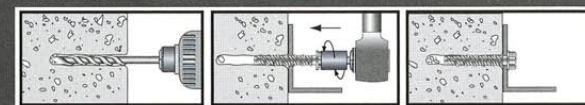
BUILDING CODE APPROVED



Anchor Specifications:

ANCHOR SIZE	WEDGE BIT SIZE	ANSI BIT SIZE	MINIMUM EMBEDMENT	MAXIMUM ALLOWABLE LOAD (LBS.) 4,000 PSI CONCRETE
1/4"	1/4"	1/4"	1"	Up to 550
3/8"	3/8"	3/8"	1-1/2"	Up to 1480
1/2"	1/2"	7/16"	1-3/4"	Up to 2270
5/8"	5/8"	9/16"	2-1/2"	Up to 4270
3/4"	3/4"	11/16"	3"	Up to 4475

Installation instructions:



- Fits standard fixture holes.
- Tighten anchor until head is seated firmly against fixture.
- Available in steel/zinc and 410 stainless.

Required Tools:

Drill, Appropriate Wedge Bit, Wrench

STRIKE ANCHOR

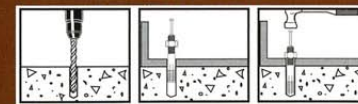
Heavy duty masonry anchor for anchoring to concrete, block, or brick.



Anchor Specifications:

ANCHOR SIZE	DRILL SIZE	MINIMUM EMBEDMENT	MAXIMUM ALLOWABLE LOAD (LBS.)
			2000 PSI CONCRETE
1/4"	1/4"	1-1/8"	95
5/16"	5/16"	1-1/2"	125
3/8"	3/8"	1-3/4"	240
1/2"	1/2"	2-1/2"	400
5/8"	5/8"	3"	745
3/4"	3/4"	3-1/2"	1015

Installation instructions:



- Quick and easy installation.
- Removable with a claw hammer if necessary.

Required Tools:

Drill, Appropriate Drill Bit, Hammer

STRAP-TOGGLE™

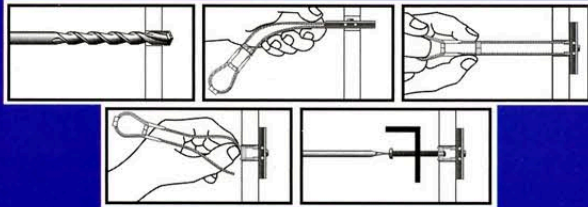
The Strap Toggle is a pre-assembled heavy duty hollow wall anchor that can be easily adjusted to accommodate a wall thickness of up to 2-1/2." The bolt and fixture may be installed and removed as often as necessary.



Anchor Specifications:

ANCHOR SIZE	DRILL SIZE	MAXIMUM ALLOWABLE LOAD (LBS.)	
		1/2" DRYWALL	C-90 HOLLOW BLOCK
3/16"	1/2"	70 lbs.	185 lbs.
1/4"	1/2"	80 lbs.	330 lbs.

Installation instructions:



- Not recommended for ceiling applications.
- Use with machine screws.
- Requires smaller hole than toggle bolt.

Required Tools:

Drill, Appropriate Drill Bit, Screwdriver

TOGGLE BOLT

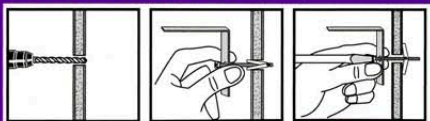
Toggle bolts are used in many horizontal and vertical applications where other anchors would be difficult to set.



Anchor Specifications:

DIAMETER SIZE	DRILL SIZE	MAXIMUM ALLOWABLE LOAD (LBS.)	
		1/2" DRYWALL	C-90 HOLLOW BLOCK
1/8"	7/16"	50 lbs.	45 lbs.
3/16"	9/16"	70 lbs.	85 lbs.
1/4"	3/4"	90 lbs.	85 lbs.
5/16"	7/8"	90 lbs.	100 lbs.
3/8"	1"	90 lbs.	175 lbs.
1/2"	1-1/4"	120 lbs.	200 lbs.

Installation instructions:



- Use when thickness of base material is unknown.

Required Tools:

Drill, Appropriate Drill Bit, Screwdriver

NYLON NAILIN®

The Nylon Nailin is a drive pin anchor that can be used for light duty, tamper proof applications in concrete, brick and block.



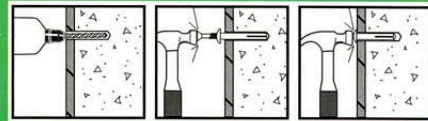
BUILDING CODE APPROVED



Anchor Specifications:

ANCHOR SIZE	MINIMUM EMBEDMENT	MAXIMUM ALLOWABLE LOAD (LBS.)		
		4,000 PSI CONCRETE	C-90 HOLLOW BLOCK	BRICK
3/16 x 1"	3/4"	45	35	30
1/4 x 3/4"	5/8"	35	20	30
1/4 x 1"	3/4"	60	35	40
1/4 x 1-1/2"	1"	60	35	45
1/4 x 2"	1-1/2"	70	40	50
1/4 x 3"	2"	70	-	-

Installation instructions:



- Not recommended for ceiling applications.
- Drill bit diameter is same as anchor diameter.

Required Tools:

Drill, Appropriate Drill Bit, Hammer

ZAMAC NAILIN®

The Zamac Nailin is a drive pin anchor that provides a permanent, tamper-proof installation in concrete, block or brick.



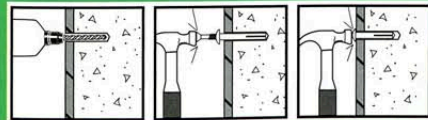
BUILDING CODE APPROVED



Anchor Specifications:

ANCHOR SIZE	MINIMUM EMBEDMENT	MAXIMUM ALLOWABLE LOAD (LBS.)		
		4,000 PSI CONCRETE	C-90 HOLLOW BLOCK	BRICK
3/16 x 7/8"	3/4"	125 lbs.	55 lbs.	90 lbs.
1/4 x 3/4"	5/8"	150 lbs.	70 lbs.	115 lbs.
1/4 x 1"	3/4"	260 lbs.	145 lbs.	160 lbs.
1/4 x 1-1/4"	7/8"	260 lbs.	-	-
1/4 x 1-1/2"	1-3/8"	285 lbs.	215 lbs.	190 lbs.
1/4 x 2"	1-7/8"	325 lbs.	-	-

Installation instructions:



- Not recommended for ceiling applications.
- Drill bit diameter is same as anchor diameter.

Required Tools:

Drill, Appropriate Drill Bit, Hammer

DRIVE®

Split Drive one-piece, pre-expanded anchors are designed for permanent, tamperproof installation into concrete base materials.



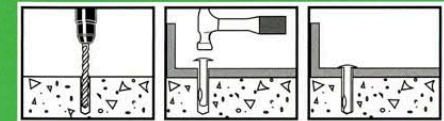
BUILDING CODE APPROVED



Anchor Specifications:

ANCHOR SIZE	DRILL SIZE	MINIMUM EMBEDMENT	MAXIMUM ALLOWABLE LOAD (LBS.)	
			4,000 PSI CONCRETE	
3/16"	3/16"	7/8"	270	
1/4"	1/4"	1-1/8"	440	
3/8"	3/8"	1-7/8"	1050	
1/2"	1/2"	2-5/8"	1225	

Installation instructions:



- Anchor is easily set with a hammer.

Required Tools:

Drill, Appropriate Drill Bit, Hammer

SPIKE®

The Spike is a pre-expanded, one piece, tamper-proof anchor that easily installs with a hammer.



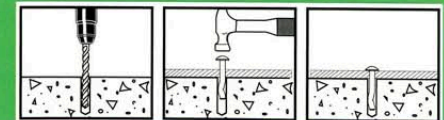
BUILDING CODE APPROVED



Anchor Specifications:

ANCHOR SIZE	DRILL SIZE	MINIMUM EMBEDMENT	MAXIMUM ALLOWABLE LOAD (LBS.)	
			4,000 PSI CONCRETE	C-90 HOLLOW BLOCK
3/16"	3/16"	1"	315	140
1/4"	1/4"	1"	350	160
3/8"	3/8"	1-3/4"	650	-

Installation instructions:



Required Tools:

Drill, Appropriate Drill Bit, Hammer

WALL PLUGS

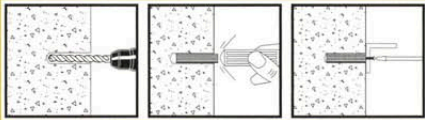
The Wallplug anchor is designed for light duty applications in concrete, block and brick. Entire length of anchor expands in base material.



Anchor Specifications:

ANCHOR SIZE	DRILL SIZE	SCREW SIZE	MAXIMUM ALLOWABLE LOAD (LBS.)		
			4,000 PSI CONCRETE	C-90 HOLLOW BLOCK	BRICK
7-9 x 1"	15/64"	# 7-# 9	50 lbs.	-	-
7-9 x 1-1/2"	15/64"	# 7-# 9	70 lbs.	-	-
10-12 x 1"	9/32"	# 10-# 12	70 lbs.	-	-
10-12 x 1-1/2"	9/32"	# 10-# 12	90 lbs.	-	-
1/4 x 1-1/2"	5/16"	#14 or 1/4" Lag	100 lbs.	-	-
1/4 x 2"	5/16"	#14 or 1/4" Lag	130 lbs.	-	-
5/16 x 1-1/2"	3/8"	# 16-# 18 or 5/16" Lag	90 lbs.	-	-
5/16 x 2"	3/8"	# 16-# 18 or 5/16" Lag	140 lbs.	-	-

Installation instructions:



- Accepts wood or sheet metal screws.
- Not recommended for ceiling applications.
- Insert anchor flush with surface.

Required Tools:

Drill, Appropriate Drill Bit, Screwdriver

LEAD ANCHOR

Lead anchors are for quick installation of medium weight fixtures in masonry.



Anchor Specifications:

ANCHOR SIZE	DRILL SIZE	SCREW SIZE	MAXIMUM ALLOWABLE LOAD (LBS.)		
			4,000 PSI CONCRETE	C-90 HOLLOW BLOCK	BRICK
6-8	1/4"	#6-8	50	15	15
10-14	5/16"	#10, 14 (1/4")	125	80	65
16-18	3/8"	#16-18	225	150	175

Installation instructions:



- Insert anchor flush with surface.
- Accepts either wood or sheet metal screws.
- Not recommended for ceiling applications.

WARNING: This product contains lead, known to the State of California to cause cancer, and birth defects or other reproductive harm. Wash hands after handling.

Required Tools:

Drill, Appropriate Drill Bit, Screwdriver

LAG SHIELD

Lag Shields provide secure anchorage of lag screws in concrete and the mortar joints of block and brick.

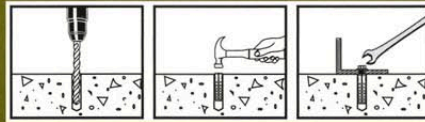


Anchor Specifications:

ANCHOR SIZE	DRILL SIZE	MINIMUM EMBEDMENT	MAXIMUM ALLOWABLE LOAD (LBS.)		
			4,000 PSI CONCRETE	C-90 HOLLOW BLOCK	BRICK
1/4 S	1/2"	1"	75	45	50
5/16 S	1/2"	1-1/4"	150	70	85
3/8 S	5/8"	1-3/4"	300	160	240
1/2 S	3/4"	2"	425	200	240
1/4 L	1/2"	1-1/2"	160	-	-
5/16 L	1/2"	1-3/4"	200	-	-
3/8 L	5/8"	2-1/2"	385	-	-
1/2 L	3/4"	3"	535	-	-

In block and brick, only short lag shields are recommended.

Installation instructions:



- Installs flush with base material.
- Internally threaded for easy fixture removal.

Required Tools:

Drill, Appropriate Drill Bit, Wrench, Hammer

MACHINE SCREW ANCHOR

Expansion type anchor made up of a lead sleeve and a threaded metal cone of rustproof alloy.



Anchor Specifications:

ANCHOR SIZE	DRILL SIZE	SETTING TOOL SIZE	MAXIMUM ALLOWABLE LOAD (LBS.)		
			4,000 PSI CONCRETE	C-90 HOLLOW BLOCK	BRICK
10-24	3/8"	#10	235	140	175
1/4-20	1/2"	1/4"	350	175	290
5/16-18	5/8"	5/16"	515	295	345
3/8-16	3/4"	3/8"	775	340	440
1/2-13	7/8"	1/2"	1075	470	640

Installation instructions:



- Installs flush with base material.
- Insert conical end of anchor first.
- Anchor is properly expanded when setting tool is flush with top of anchor.

WARNING: This product contains lead, known to the State of California to cause cancer, and birth defects or other reproductive harm. Wash hands after handling.

Required Tools:

Drill, Appropriate Drill Bit, Setting Tool, Hammer

DROP-IN ANCHOR

Drop In anchors are appropriate for overhead applications in concrete. Install flush with surface or below material surface.



Anchor Specifications:

ANCHOR SIZE	DRILL DIAMETER	SETTING TOOL SIZE	MINIMUM EMBEDMENT	MAXIMUM ALLOWABLE LOAD (LBS.)
				4,000 PSI CONCRETE
1/4"	3/8"	1/4"	1"	495
3/8"	1/2"	3/8"	1-9/16"	1045
1/2"	5/8"	1/2"	2"	1440
5/8"	7/8"	5/8"	2-1/2"	1860
3/4"	1"	3/4"	3-3/16"	3600

Installation instructions:



- Internally threaded for easy fixture removal.
- Anchor is properly expanded when setting tool is flush with top of anchor.

Required Tools:

Drill, Appropriate Drill Bit, Wrench, Setting Tool, Hammer

TAPPER® CONCRETE SCREW

State of the art thread design cuts into concrete, block, or brick.



FOR USE WITH
PRESSURE TREATED
LUMBER

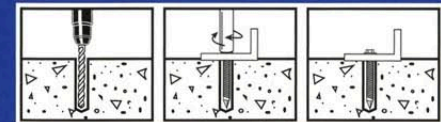
BUILDING CODE
APPROVED



Anchor Specifications:

ANCHOR SIZE	DRILL SIZE	MINIMUM EMBEDMENT	MAXIMUM ALLOWABLE LOAD (LBS.)		
			4,000 PSI CONCRETE	C-90 HOLLOW BLOCK	BRICK
3/16"	5/32"	1"	90	70	100
		1-1/4"	170	80	170
		1-1/2"	230	95	195
		1-3/4"	235	95	210
1/4"	3/16"	1"	205	90	150
		1-1/4"	330	140	180
		1-1/2"	355	190	210
		1-3/4"	370	190	225

Installation instructions:



- Removable and simple to use.
- To effectively use Tapper drill bits, use a hammer drill.
- Available in Blue & White Perma-seal™ and 410 stainless.

Required Tools:

Drill, Appropriate Tapper Bit, Phillips Driver or Hex Driver, Tapper Installation Tool (recommended)